

Installation and Setup

1. After purchasing the app on forceXchange you will be able to see two buttons “Install in Sandbox” and “Install in Production”. You can choose either of these two options. If you want to test this app first before using it in production environment, install it in Sandbox.
2. Go through the following steps to install the component in your Salesforce Org.
3. Click on either “Install in Sandbox” button or “Install in Production” button.
4. You may be asked to login with your Salesforce org credentials.
5. Select which type of users you want to install it for and click on the **Install** button to install the app.

Install Local Time component
By ChazeCloud Services

! What if existing component names conflict with ones in this package?
 Do not install.
 Rename conflicting components in package.

Install for Admins Only
 Install for All Users
 Install for Specific Profiles...

Install **Cancel**

App Name	Publisher	Version Name	Version Number
Local Time component	ChazeCloud Services	Spring 2020	1.1

6. Wait until the Installation complete screen appears. Click the **Done** button.

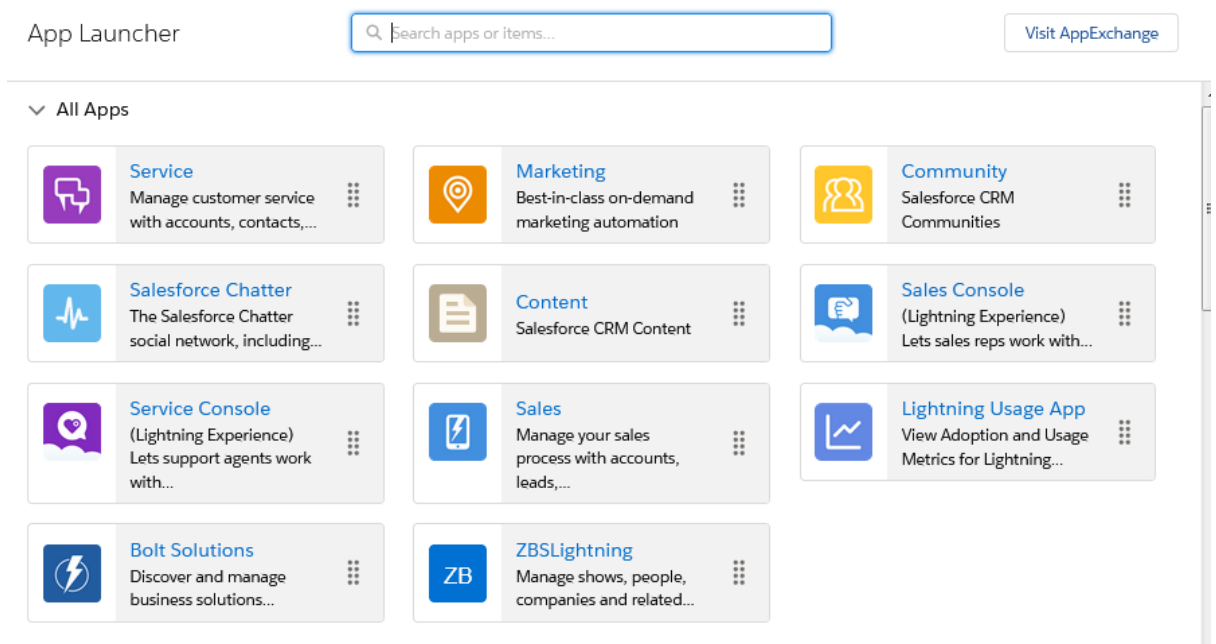
Install Local Time component
By ChazeCloud Services

i Installation Complete!

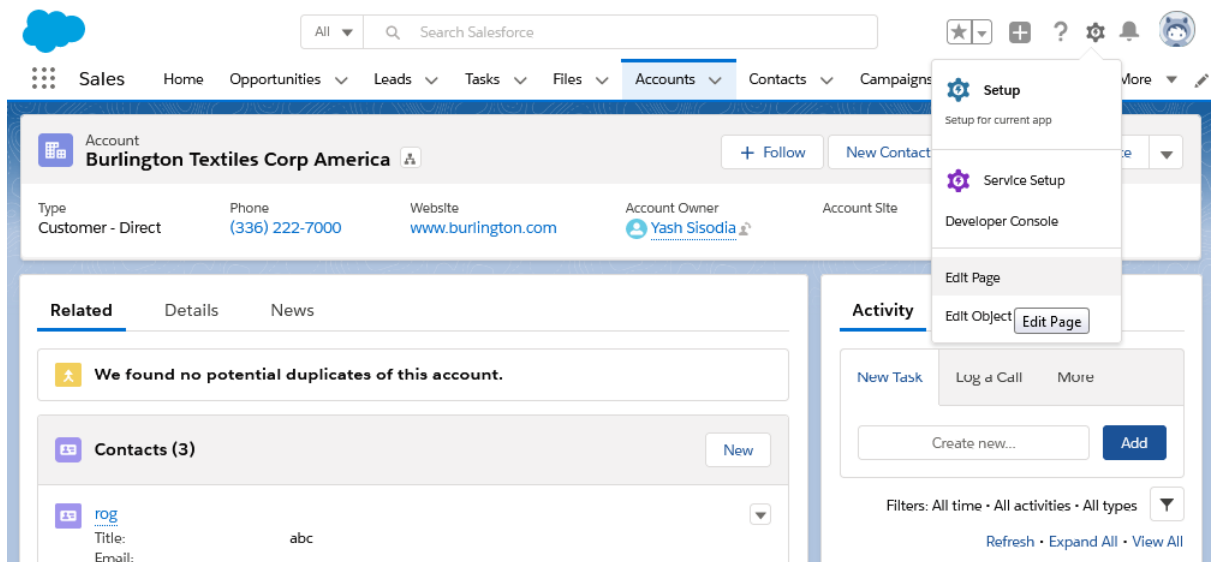
Done

App Name	Publisher	Version Name	Version Number
Local Time component	ChazeCloud Services	Spring 2020	1.1

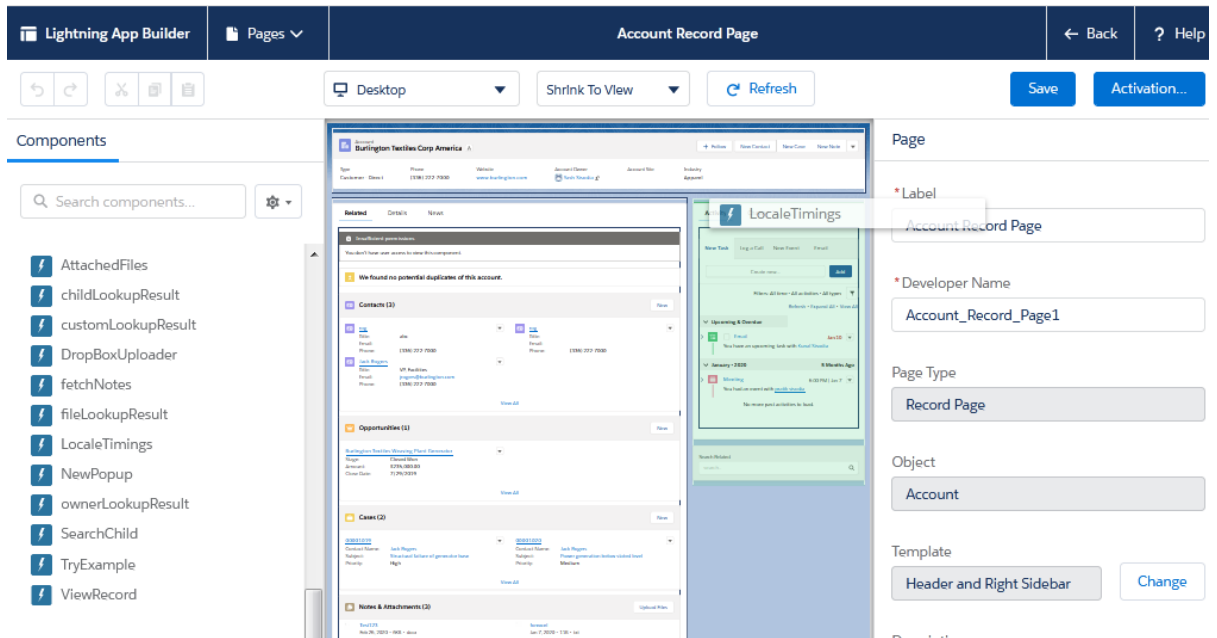
7. From Salesforce Lightning Experience App Launcher, select the **Sales App** to setup the app.



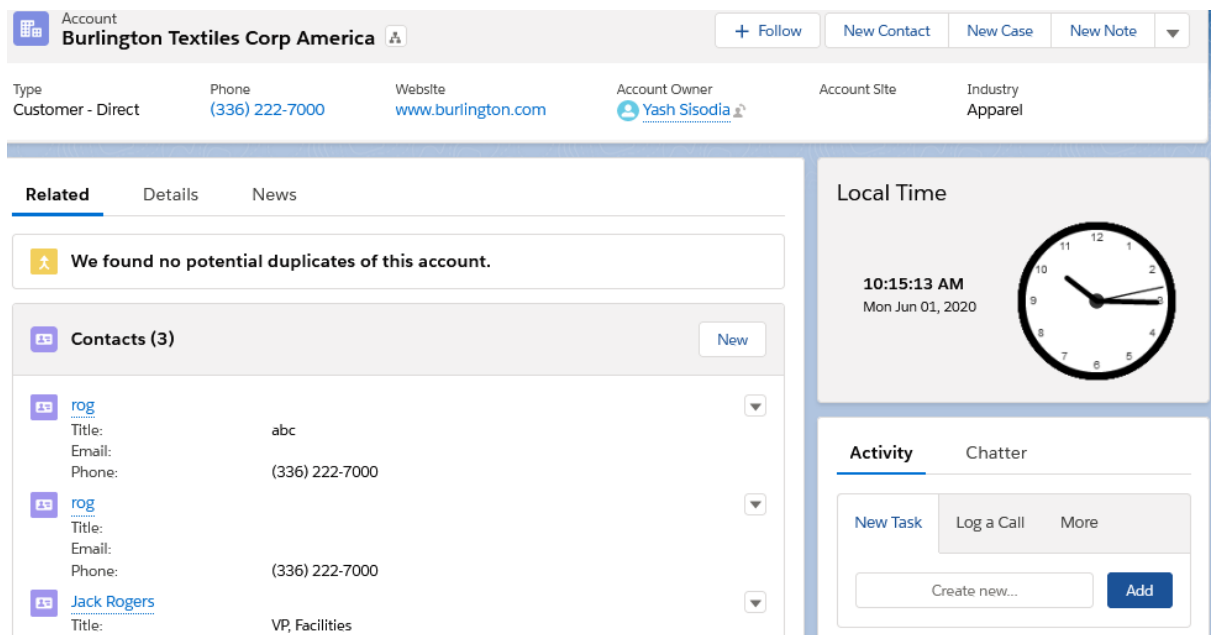
8. Now click on **Accounts** Tab and then click on any record. After record is open click on Setup icon and then click on Edit Page.



- From left side in Components panel select and drag **LocalTimings** from **Custom** components and drop it on the record details page where you want the component. Click the **Save** button to save the page layout changes. Click the **Activation** button to deploy these changes to your org.



- Congratulation you have successfully installed the app on your Salesforce Org. By following step 7 – 10 you can add the component to **Opportunities, Contacts and Leads** object also.



Data Quality

The Local Time Component is dependent on certain fields in the Accounts, Opportunities, Contacts, and Leads pages to compute the correct time for the destination location.

The following are the default fields where correct data is needed. Please refer to **Supported Country List** to identify the correct values for each country.

Account : Billing Country, Billing State/Province, Billing City

Contact : Mailing Country, Mailing State/Province, Mailing City

Lead : Country, State/Province, City

Opportunities : AccountId

In cases when the Local Time Component could not calculate the time based on the above fields (because the address data is incomplete or inaccurate), it will show a message that Either Country name is not provided or it is not matching with country list.

The screenshot displays a CRM interface for an account named 'Edge Communications'. The account details include: Type: Customer - Direct; Phone: (512) 757-6000; Website: http://edgecomm.com; Account Owner: ChazeCloud Services; Account Site; Industry: Electronics. The 'Related' section shows a message: 'We found no potential duplicates of this account.' Below this, there are two contacts listed: Sean Forbes (CFO) and Rose Gonzalez (SVP, Procurement). On the right side, the 'Local Time' section displays an error message: 'Either Country name is not provided or it is not matching with country list'. At the bottom, there are tabs for 'Activity' and 'Chatter'.

Supported Country List

Region	Country Name (Country Code)	State	City
North America	United States or USA	AL, AK, AZ, AR, CA, CO, CT, DE, DC, FL, GA, HI, ID, IL, IN, IA, KS, KY, LA, ME, MD, MA, MI, MN, MS, MO, MT, NE, NV, NH, NJ, NM, NY, NC, ND, OH, OK, OR, PA, RI, SC, SD, TN, TX, UT, VT, VA, WA, WV, WI, WY	
North America	Canada(CA)	NL, NS, NB, QC, ON, NU, MB, SK, AB, NT, BC, YT	
North America	Mexico(MX)	AGU, BCN, BCS, CAM, CHP, CHH, COA, COL, DIF, DUR, GUA, GRO, HID, JAL, MEX, MIC, MOR, NAY, NLE, OAX, PUE, QUE, ROO, SLP, SIN, SON, TAB, TAM, TLA, VER, YUC, ZAC	
Europe	Albania(AL), Andorra(AD), Austria(AT), Belarus(BY), Belgium(BE), Bosnia and Herzegovina(BA), Bulgaria(BG), Croatia(HR), Czech Republic(CZ), Denmark(DK), Estonia(EE), Finland(FI), France(FR), Germany(DE), Gibraltar(GI), Guernsey(GG), Hungary(HU), Iceland(IS), Ireland(IE), Isle of Man(IM), Italy(IT), Jersey(JE), Latvia(LV),		

	<p>Liechtenstein(LI), Lithuania(LT), Luxembourg(LU), Macedonia(MK), Malta(MT), Republic of Moldova(MD), Monaco(MC), Montenegro(ME), Norway(NO), Poland(PL), Portugal(PT), Romania(RO), San Marino(SM), Serbia(RS), Slovakia(SK), Slovenia(SI), Spain(ES), Sweden(SE), Switzerland(CH), Netherlands(NL), Turkey(TR), United Kingdom(UK), Ukraine(UA), Holy See (Vatican City State)(VA), Aland Islands(AX)</p>		
Europe	Russia (RU)		<p>Kaliningrad Moscow, Volgograd, Samara, Yekaterinburg, Omsk, Novosibirsk, Novokuznetsk, Krasnoyarsk, Irkutsk, Yakutsk, Vladivostok, Sakhalin, Magadan, Kamchatka</p>
Asia and Middle East	<p>Afghanistan(AF), Armenia(AM), Azerbaijan(AZ), Bangladesh(BD), Bahrain(BH), Brunei Darussalam(BN), Bhutan(BT), Cambodia, China(CN), Cyprus(CY), Georgia(GE), Hong Kong(HK), India(IN), Iraq(IQ), Islamic Republic of Iran(IN), Israel(IL), Jordan(JO), Japan(JP),</p>		

	<p>Krygyzstan(KG), Democratic People's Republic of Korea(KP), Republic of Korea(KR), Kuwait(KW), Laos(LA), Lebanon(LB), Sri Lanka(LK), Myanmar(MM), Macao(MO), Malaysia(MY), Nepal(NP), Oman(OM), Philippines(PH), Pakistan(PK), Palestine(PS), Qatar(QA), Saudi Arabia(SA), Singapore(SG), Syrian Arab Republic(SY), Thailand(TH), Tajikistan(TJ), Timor- Leste(TL), Turkmenistan(TM), Taiwan(TW), Uzbekistan(UZ), Viet nam(VN), Yemen(YE), United Arab Emirates(AE)</p>		
Asia and Middle East	Indonesia(ID)		<p>Bandung, Bogor, Cirebon, Kediri, Kudus, Jakarta, Madiun, Malang, Pekalongan, Semarang, Surabaya, Surakarta, Tasikmalaya, Tegal, Yogyakarta, Jambi, Medan, Padang, Palembang, Pekanbaru Pematangsiantar, Tanjungkarang, Makassar, Manado, Raba, Kupang, Mataram, Denpasar, Singaraja, Endeh, Balikpapan, Banjarmasin, Samarinda, Pontianak, Jayapura, Ambon, Ternate</p>
Asia and Middle East	Kazakhstan(KZ)		Almaty, Astana,

			Arkalyk, Baikonur, Karaganda, Qyzylorda, Aqtobe, Atyrau, Aqtau, Oral
Asia and Middle East	Mongolia(MN)		Ulaanbaatar, Hovd, Choibalsan
Oceania	Australia(AU)	ACT, TAS, VIC, NSW, QLD, SA, NT, WA	
Oceania	New Zealand(NZ)		
South America	Antigua and Barbuda(AG), Anguilla(AI), Argentina(AR), American Samoa(AS), Aruba(AW), Bahamas(BS), Barbados(BB), Bolivia(BO), Belize(BZ), Cayman Islands(KY), Chile(CL), Collectivity of Saint Martin(MF), Colombia(CO), Costa Rica(CR), Cuba(CU), Dominica(DM), Dominican Republic(DO), Ecuador(EC), El Salvador(SV), French Guiana(GF), Grenada(GD), Greenland(GL), Guadeloupe(GP), Guatemala(GT), Guyana(GY), Honduras(HN), Haiti(HT), Jamaica(JM), Martinique(MQ), Montserrat(MS), Nicaragua(NI), Panama(PA), Paraguay(PY), Peru(PE), Puerto Rico(PR), Saint Pierre and Miquelon(PM), Saint Kitts and		

	Nevis(KN), Netherlands Antilles(AN), Saint Barthelemy(BL), Saint Vincent and the Grenadines(VG), Saint Lucia(LC), Suriname(SR), Turks and Caicos Islands(TC), Trinidad and Tobago(TT), Uruguay(UY), Venezuela(VE), British Virgin Islands(VG), United States Virgin Islands(VI)		
Oceania	Fiji(FJ)		
Oceania	Samoa(WS)		
South America	Brazil(BR)	AC, AL, AM, AP, BA, CE, DF, ES, GO, MA, MS, MG, MT, PA, PB, PE, PR, PI, RJ, RN, RS, RO, RR, SC, SE, SP, TO	
Africa	Algeria(DZ), Angola(AO), Botswana(BW), Benin(BJ), Burkina Faso(BF), Burundi(BI), Cameroon(CM), Central African Republic(CF), Chad(TD), Cote D'Ivoire(CI), Djibouti(DJ), Egypt(EG), Eritrea(ER), Ethiopia(ET), Equatorial Guinea(GQ), Gabon(GA), Ghana(GH), Guinea(GN), Guinea-Bissau(GW), Kenya(KE), Liberia(LR), Lesotho(LS), Libya(LY), Mali(ML), Mauritania(MR), Malawi(MW),		

	<p>Morocco(MA), Mozambique(MZ), Namibia(NA), Niger(NE), Nigeria(NG), Rwanda(RW), Republic of the Congo(CG), Sao Tome and Principe(ST), Senegal(SN), Somalia(SO), South Africa(ZA), Sudan(SD), Swaziland(SZ), Sierra Leone(SL), Tanzania(TZ), Gambia(GM), Togo(TG), Tunisia(TN), Uganda(UG), Western Sahara(EH), Zambia(ZM), Zimbabwe(ZW)</p>		
Africa	<p>Democratic Republic of the Congo(CD)</p>		Kinshasa, Lubumbashi