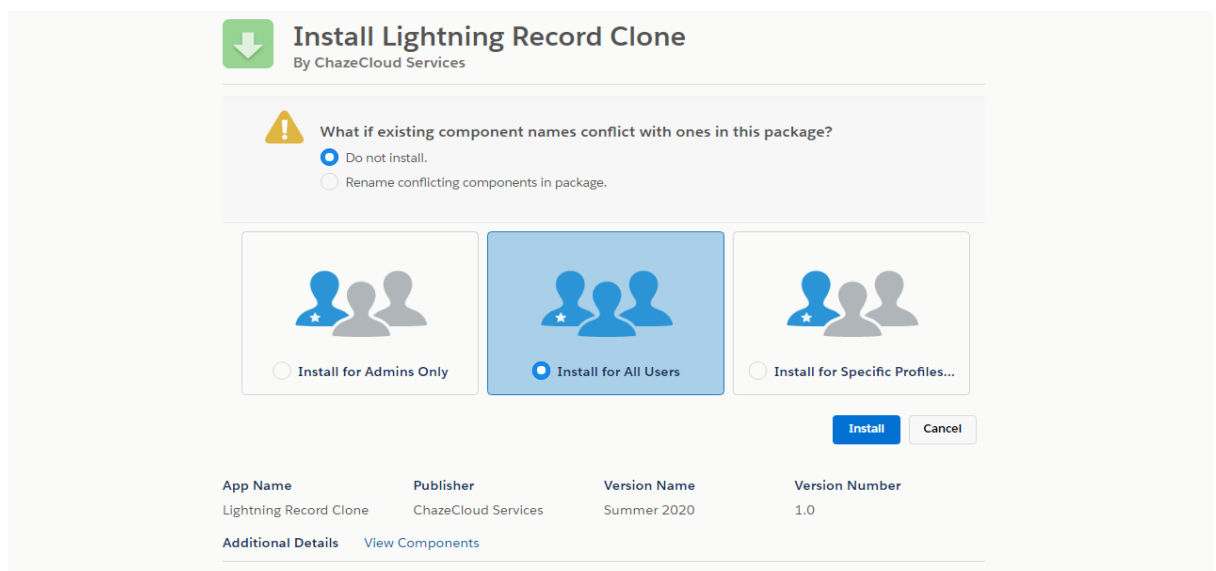
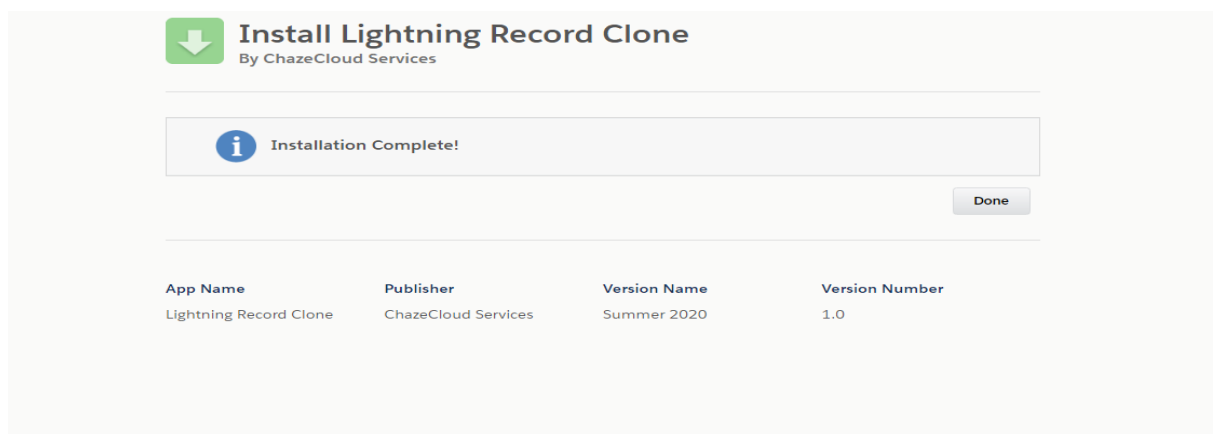


Installation and Setup

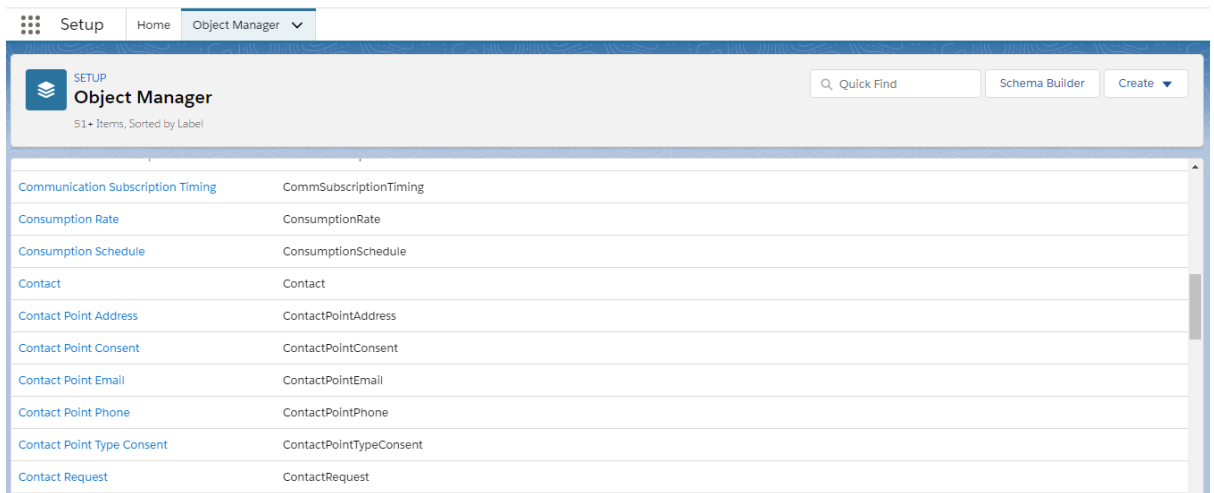
1. After purchasing the app on forceXchange you will be able to see two buttons “Install in Sandbox” and “Install in Production”. You can choose either of these two options. If you want to test this app first before using it in production environment, install it in Sandbox.
2. Go through the following steps to install the component in your Salesforce Org.
3. Click on either “Install in Sandbox” button or “Install in Production” button.
4. You may be asked to login with your Salesforce org credentials.
5. Select which type of users you want to install it for and click on the **Install** button to install the app.



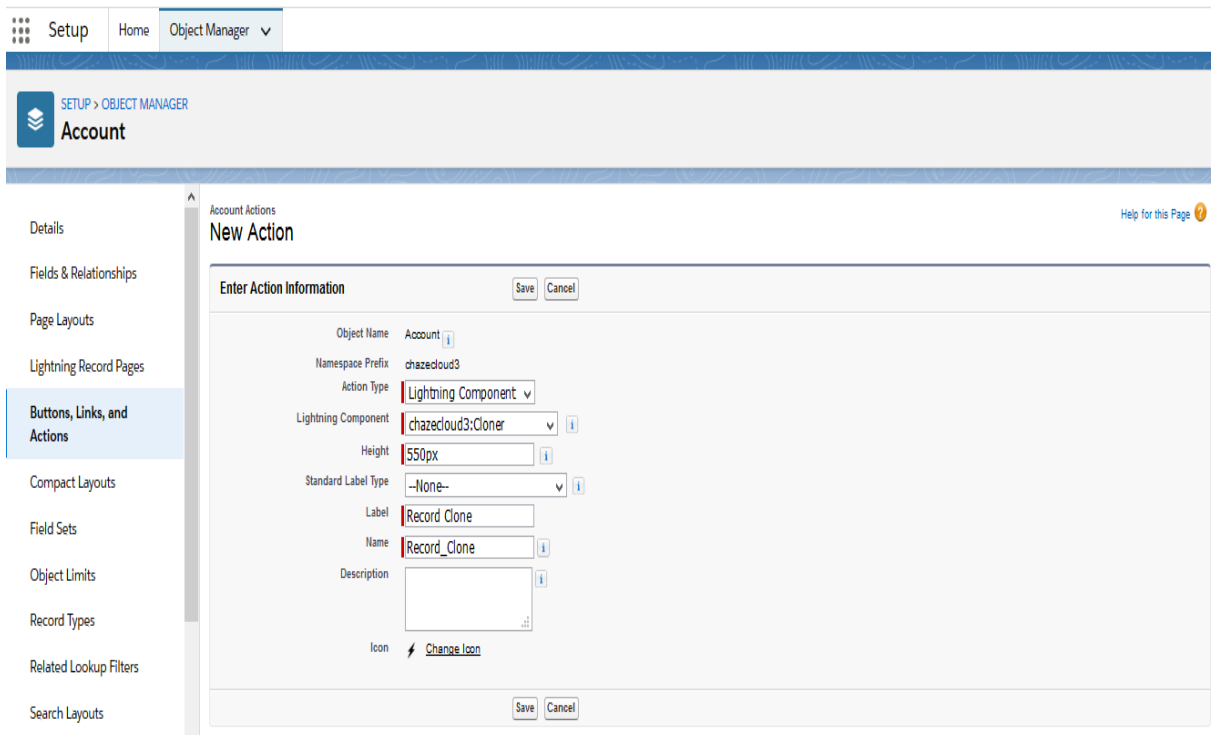
6. Wait until the Installation complete screen appears. Click the **Done** button.



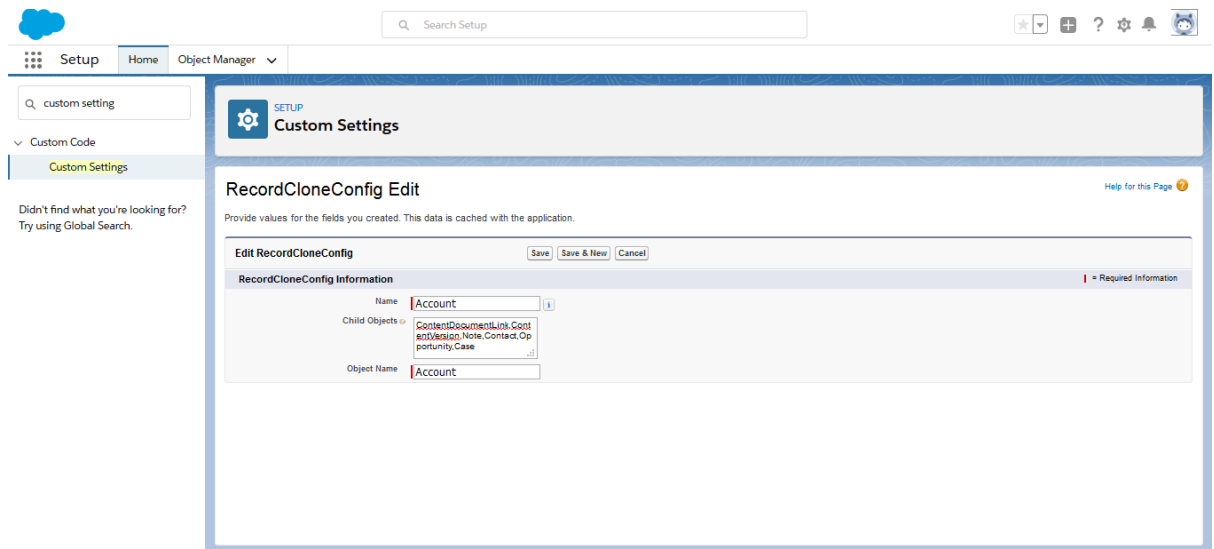
- From setup click on **Object Manager** and then click on the object on which you want “Record Cloner” button.



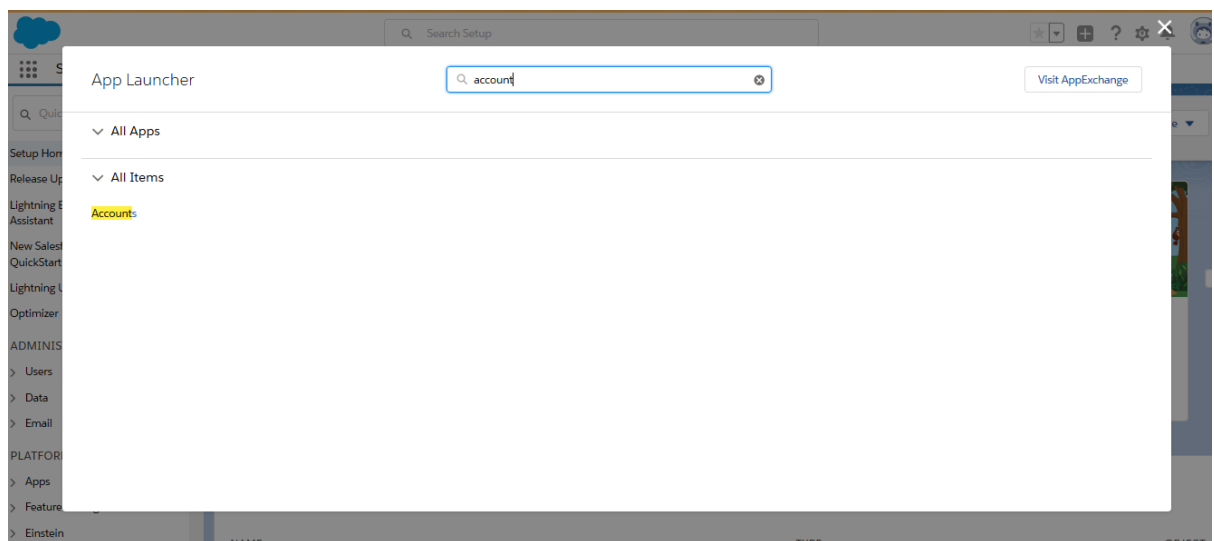
- Now click on **Button, Links and Actions** and then click on the **New Action** button. Fill all details as shown in the below image and click on Save and then put the button on your page layout of the object.



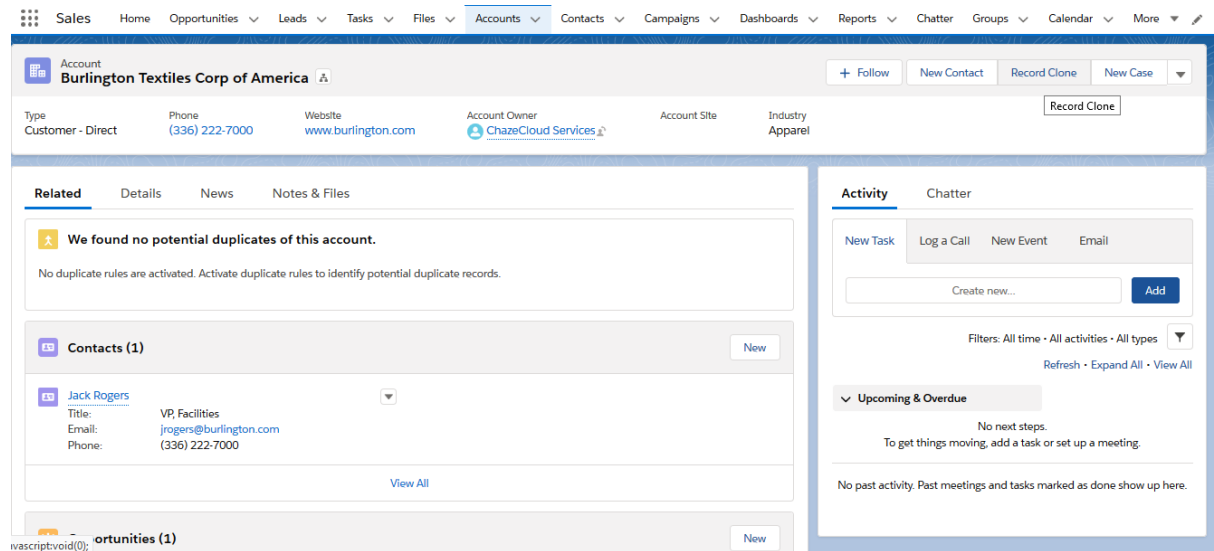
9. The Record Cloner component can work on any Object but for cloning related child you have to add the name of child in custom settings. Click on home button and type “custom settings” in Quick Find box and open **Custom Settings**. Now click on Manage button where label is **RecordCloneConfig** click on new button and enter name of object in **Object Name** and comma-separated name of related child in **Child Object** field and save custom settings.



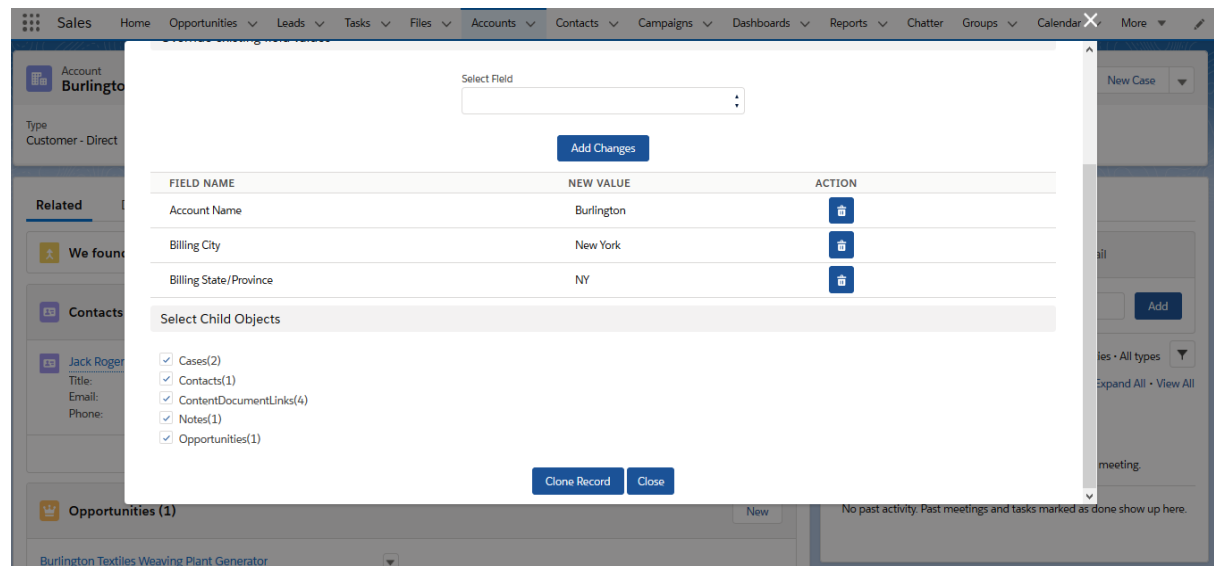
10. From Salesforce Lightning Experience App Launcher, select or search the **Object** on which you have place **Record Clone** button.



11. Now click on your **Object** Tab and then click on any record you want to clone. After record is open click on **Record Clone** action button.



12. Now fill all field values and then click on **Clone Record** button to clone record. The clone record will clone the record with the related child you have selected.



Note : If you get “DUPLICATES_DETECTED” error then you need to check whether you have duplication rule active for the object which you are going to clone. If it is active then you have to deactivate this rule to clone objects.